

# mWRAPR Blood tubes

Blood DNA / RNA tubes

(RUO)



## PRODUCT DESCRIPTION

mWRAPR Blood RNA/DNA tube collects, stores, and transports whole blood samples when nucleic acid integrity matters. mWRAPR Blood RNA/DNA tube ensures nucleic acid stability & integrity at room temperature for up to a week for downstream in-vitro diagnostics.

## FEATURES

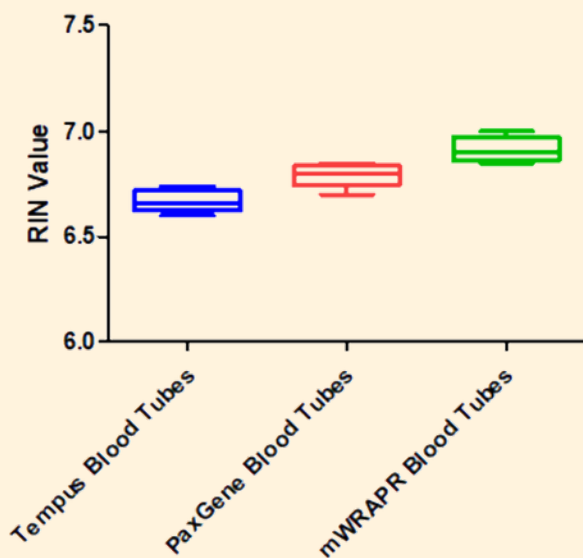
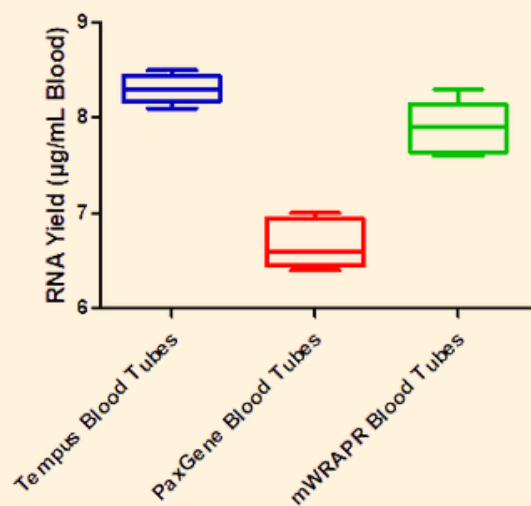
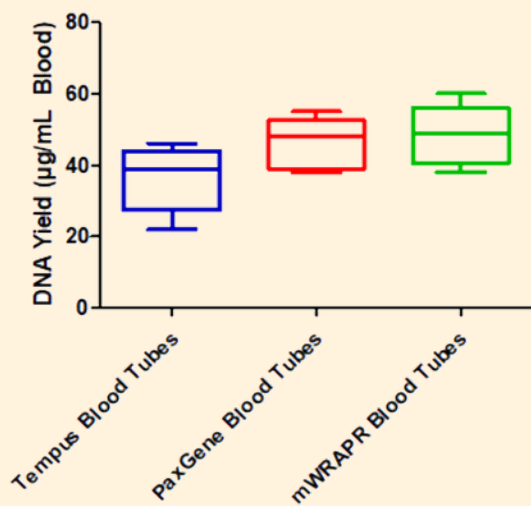
- Stabilize genetic material for up to 14 days at room temperature
- Accurate & reproducible DNA/RNA yields and high RIN numbers for down-stream processing and analysis
- Zero contamination shelf-life for up to 2 years
- No cold storage required
  - Prevents the use of liquid nitrogen for long-term storage
  - Protection from freeze-thaw cycles
  - Indefinite storage at -20°C / -80°C
- Easy sample processing
  - DNA / RNA can be directly isolated from mWRAPR Blood DNA tubes using common extraction kits

Product Name	Cat. No.	Draw Vol.	Stabilization solution Vol.	Pack Size	Price € (Euros)
mWRAPR Blood DNA /RNA Tubes	MW-AZ001-A	1.4mL	2.6mL	50 tubes	
	MW-AZ001-B	3.4mL	6.6mL	50 tubes	
	MW-AZ001-C	Bulk	Bulk	100mL	On Request

Note: For every 1mL Blood Sample, 0.5mL Stabilization Solution is used in tubes

# Comparison with other Blood Tubes

DNA & RNA Yield  
RIN Values



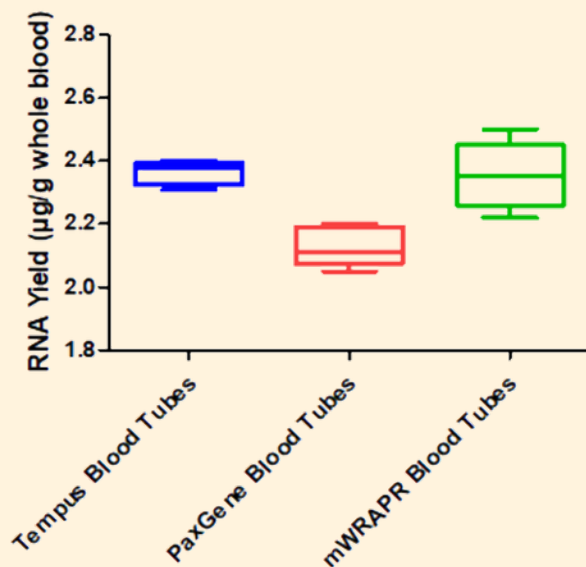
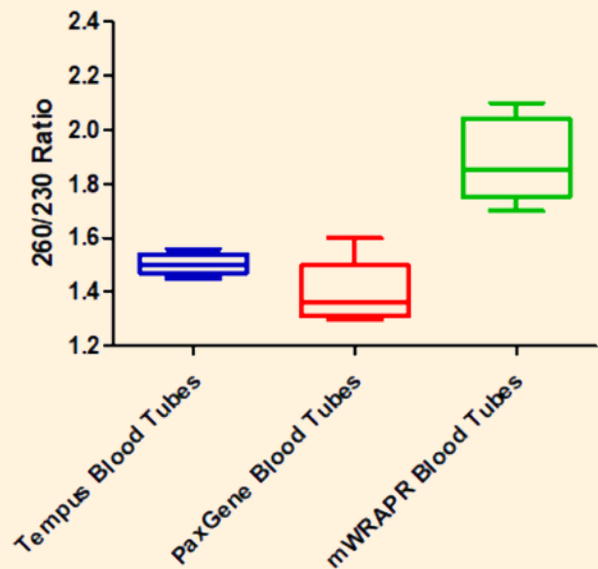
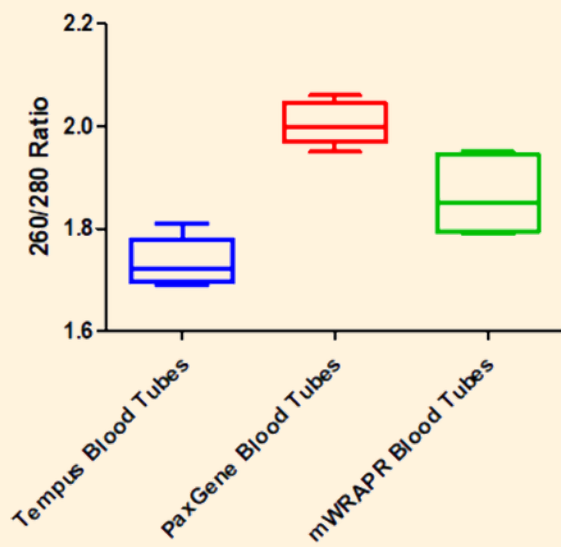
mWRAPR Blood DNA/RNA tubes showed good DNA & RNA yield and RIN values in comparison with competitor tubes such as Tempus and PaxGene Blood Tubes

# Comparison with other Blood Tubes

260/280 Ratio

260/230 Ratio

RIN Values



mWRAPR Blood DNA/RNA tubes showed good 260/280, 260/230 ratio and RNA (whole blood) yield in comparison with competitor tubes such as Tempus and PaxGene Blood Tubes

# Specifications

Tube material	Polypropylene
Tube size	4 mL (13*75mm)
Draw volume	2.7 mL
Closure type	Vacuum cap
Stabilization solution	1.3 mL

# Customer Testimony

“ Long story short, Blood samples were kept at 37- 40 Celsius for 50 days and got very good genotyping results from the Azooka Blood collection tubes

Dr. Vijayamahantesh  
Postdoctoral fellow  
University of Missouri, Columbia, USA ”

# Instructions

- Ensure that the mWRAPR blood DNA/RNA tube is at room temperature (18°C to 25°C) before use. Label the tubes appropriately for patient identification.
- If an mWRAPR RNA/DNA blood tube is the only tube to be drawn, a small amount of blood should be drawn in the discard tube before being drawn into the mWRAPR tube. Otherwise, mWRAPR should be the last tube to be drawn in the phlebotomy procedure

## Venipuncture

- Using a blood collection set such as the Vacutainer ultra touch push button or Vacutainer safety lock blood collection set and the one-use holder, perform venipuncture using the institution's recommended procedure for standard venipuncture.

## Blood collection

- Hold the mWRAPR RNA/DNA tube vertically below the blood donor's arm during blood collection. Allow at least 10 seconds for a complete blood draw to take place. Ensure that blood has stopped flowing into the tube before removing the tube from the holder

## After blood collection

- Invert the mWRAPR blood RNA/DNA tube 8 to 10 times.
- Samples can be processed immediately or stored at room temperature in mWRAPR blood RNA/DNA tubes upright for up to 7 days and 4°C for up to a month or indefinitely at -20°C to -80°C



### RESEARCH CENTRE:

Society for Innovation and Development, Indian Institute of Science,  
Malleshwaram, Bengaluru, Karnataka, India- 560055

### MANUFACTURED AT:

# 1A, Kushal Garden Arcade, 'C' Block, 5th Floor, Peenya Industrial Area,  
2nd Phase, Bengaluru, Karnataka, India- 560058

### IN ASSOCIATION WITH



Distributed by: